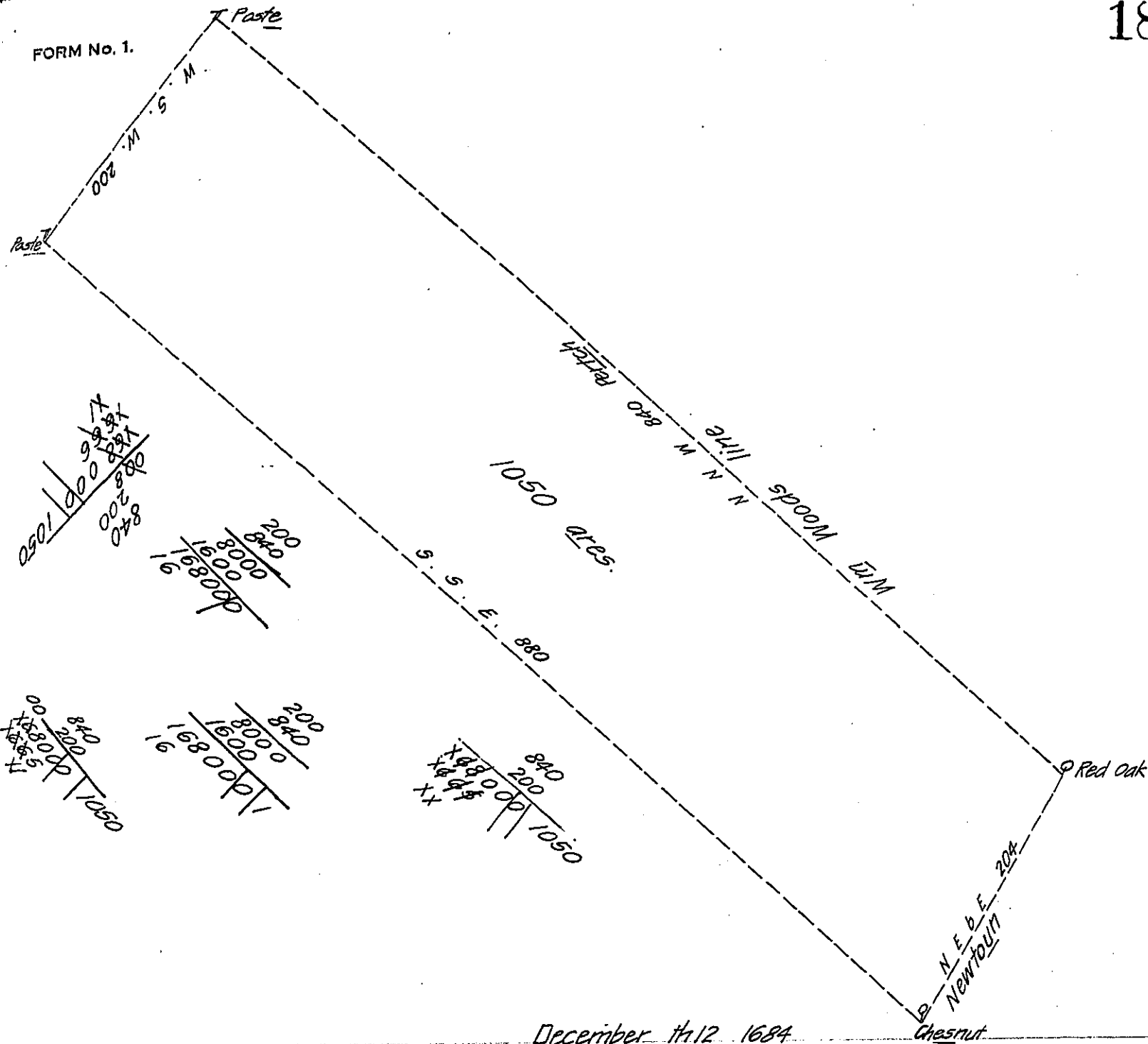


FORM No. 1.



December th 12 1684

Then Surveied for Mr James Claypool one thousand Acres of Land
 Lieng between Crum Creek and Darby Creek begining at a marked black oak
 standing in the north^{est} most line of Newtown being also the corner marked trees
 of W^m Woods and W^m Surleys Land and from thence running along the said
 -Woods and -Shurleys line of marked trees N N W 840 pertch to a marked
 poste; and from thence by a line of marked trees ~~#~~ W. S. W. 200 pertch ^{obl.}
 a marked poste and from thence by a line of marked trees S. S. E. 880
 pertch to a marked Chestnut tree standing in the above ^{sd} line of Newtown
 and from thence ^{obl.} running along the ^{sd} line of Newtown 204 Pertch N. E. b. E to
 the first menchered black oak.

By

Charles Ashcorn. —

IN TESTIMONY that the above is a copy of the original remaining on file in
 the Department of Internal Affairs of Pennsylvania, made
 conformably to an Act of Assembly approved the 16th day of
 February, 1833, I have hereunto set my Hand and caused
 the Seal of said Department to be affixed at Harrisburg,
 this nineteenth day of February 1909

Henry Hauers
 Secretary of Internal Affairs.